



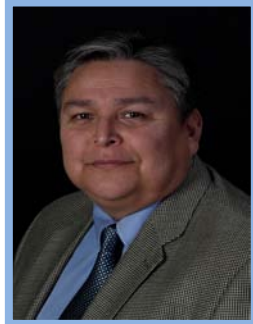
5th Annual ESSA Conference

Speaker Biographies and
Session Descriptions

Saturday, April 2, 2011

Pinnacle at the Pier
138 Victoria Ship Way
North Vancouver, BC

2011 ESSA Conference Speaker Bio



Bob Joseph
Founder
Indigenous Corporate Training Inc.

Bob Joseph, founder of Indigenous Corporate Training Inc., has been providing this kind of training since 1994. His clients include all levels of government, Fortune 500 Companies, Financial Institutions including the world bank, small and medium sized enterprises, and Aboriginal Peoples.

If you would like additional information about Bob feel free to take anything from his bio online at <http://ictinc.ca/team>.

Plenary 2 Session Details – Working Effectively with Aboriginal Peoples

Need help working with aboriginal peoples? Working Effectively with Aboriginal Peoples(TM) has been designed specifically to help people just like you. Learn hints, tips, suggestions and best practice all in a safe learning environment and avoid costly mistakes that so many others make when working with Aboriginal Peoples.

2011 ESSA Conference Speaker Bio



Carolyn Sinclair

Partner, Strategic Business Risks International Inc.
New Westminster ESS

Carolyn Sinclair is a co-founder and partner of Strategic Business Risks Inc (SBRI) which delivers investigation, emergency management and educational solutions to public and private organizations and institutions.

She has over 25 years of professional and practical experience in the areas of forensic investigations, emergency management, police victim services and risk management.

Carolyn is the City of New Westminster's Emergency Services Deputy Director Alternate. She is a member and Provincial lead alternate for Disaster Psychosocial Services (DPS) under the umbrella of Provincial Health. She is member of the Emergency Social Services Association's, Provincial Advisory team who provide guidance and support to ESS program and training initiatives in BC. Carolyn is an instructor at the Emergency Management Division of the Justice Institute of BC. During the past 11 years she has worked with numerous organizations and municipalities in developing customized training and plans in the areas of emergency and disaster management.

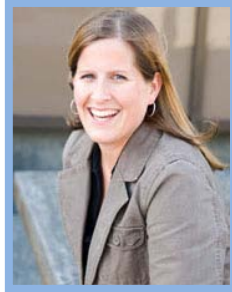
She holds the position of Executive Director for Police Victim Services of BC as well as the BC Crime Prevention Association.

For the past 13 years she has been a member of an International Archeological Forensic Recovery Team. This team responds to national and international requests for aid in the search, recovery and repatriation of human remains as a result of natural disasters terrorism and crimes against humanity. Team deployments include evidence recovery, collection and preservation for the purpose of crimes against humanity tribunals and family repatriation. Carolyn instructs in the field of Forensic Anthropology and Forensic Biology at the University of Fraser Valley.

Plenary Session 1 Details – Why We Do What We Do!

This session examines the roles and experiences of an ESS worker who juggle multiple tasks and responsibilities. How we handle ourselves affects us personally and professionally. The forum will focus on sharing experiences, and provide tips and tools related to emergency response. Paid workers and volunteers need to aware of self care in order to continue caring for others. This is a spotlight on self care for those who live a Disaster Ready Lifestyle!

2011 ESSA Conference Speaker Bio



Deanna Selver
Emergency Social Services Director
City of Richmond

Deanna Selver has her Bachelor of Arts in Sociology from the University of British Columbia and has taken training in leadership through BCIT and the City of Richmond Corporate University. She is passionate about team development and team dynamics. She joined her first team at the age of 6 when she first started playing organized sports. Since that time she has played on, coached and led countless teams. Throughout her life Deanna has played many sports and volunteered for numerous organizations. She has been a soccer coach, a Brownie leader, a Big Sister and an Auxiliary Constable with the Richmond RCMP. She has extensive work experience in the field of recreation having done everything from summer camp leader to activity programmer for seniors, and has worked for the City of Richmond since 1995.

In January 2007 Deanna became the ESSD for the City of Richmond when she was given the privilege of leading a team of 100 volunteers. She is also a Provincial Emergency Social Services Instructor with the JIBC and enjoys meeting volunteers from around the province. In 2008 she joined the ESSA Advisory Forum and has benefited immensely from the networking and information sharing as a result of her participation in the group. Deanna strongly believes that in ESS we are all on the same team and we need to continue to work together and share ideas and resources.

Session Topic Details – Team Building

ESS teams are comprised of individuals from all walks of life with varying backgrounds and differing belief systems. At times it can be challenging to come to a group consensus in such teams. Participants in this workshop will take part in an experiential learning exercise where they will explore the dynamics of team communication as it is influenced by personal value systems. We will explore the challenges and benefits of team decision making through this interactive and participation based activity.



Jackie Kloosterboer
Emergency Planning Coordinator
City of Vancouver

For 15 years Jackie Kloosterboer has been involved with Emergency Management – the last seven with the City of Vancouver. Jackie has her certificate in Emergency Management from the Justice Institute of British Columbia. She is the Emergency Social Services (ESS) Director with a team of over 200 ESS volunteers. Vancouver ESS responds to an average of 40 activations each year to assist those who have been displaced. In addition Jackie is responsible for the Vancouver Public Education Program (NEPP) teaching residents and businesses how to be prepared for emergencies and disasters.

Session Topic Details – ESS New Directions

This session looks at recent ESS activations in Vancouver highlighting some of the events over the last few years. It looks at how working together with other ESS teams can accomplish great results when teams join forces and share resources.

The Olympics was a great example where Richmond, the North Shore and Vancouver developed a multi jurisdictional Group Lodging Team, We will also look at how involving local resources such as animal control, welfare, churches and a variety of community resources can strengthen your team and your response.

We will look to the future and identify what ESS Volunteers across the province would like to see in place for our future activations.

2011 ESSA Conference Speaker Bio



John Gray
Assistant Manager, Animal Control
City of Vancouver

A native of BC, born in North Vancouver, John began his career working with the City of Vancouver in 1992, where he worked as a zoo keeper. John later worked in Special Events and Filming, facilitating the use of Vancouver's Parks. He took an active role in on-site supervision, which led to the creation of the Vancouver Park Board's Ranger Program. A program he designed and evolved to a team of more than 37 Park Rangers.

Today John is the Assistant manager of Animal Control, supervising 17 Animal Control officers and overseeing the operation of a very busy Vancouver shelter. John is currently an alternate director of the City of Vancouver's Emergency Social Services program and a team captain on DAT (Disaster Assistance Team – Level 1). John is also the co-chair of Vancouver's Emergency Pet Committee which is tasked with looking after our Pet Population when disaster strikes.

Session Topic Details – ESS New Directions

This session looks at recent ESS activations in Vancouver highlighting some of the events over the last few years. It looks at how working together with other ESS teams can accomplish great results when teams join forces and share resources.

The Olympics was a great example where Richmond, the North Shore and Vancouver developed a multi-jurisdictional Group Lodging Team. We will also look at how involving local resources such as animal control, welfare, churches and a variety of community resources can strengthen your team and your response.

We will look to the future and identify what ESS Volunteers across the province would like to see in place for our future activations.

2011 ESSA Conference Speaker Bio



Luana Kaleikini

Emergency Social Services Director
City of Revelstoke and Columbia Shuswap Regional District
Electoral Area B

Luana Kaleikini began her ESS journey in the Okanagan area during Firestorm 2003 as a convergent volunteer. This initiation has evolved into a position as the ESS practitioner for the City of Revelstoke and the surrounding area.

Luana earned an Emergency Management Certificate from the Justice Institute and is currently enrolled in the Exercise Design Certificate program. She has been an active member of the ESSA Advisory Forum since its inception and serves as a Board member of the BC Association of Emergency Managers.

After a twenty-five year career in financial accounting, the Emergency Management world challenges have been a welcome change to the bean counter persona. Luana brings a lively passion for the value and future of ESS in the province, and a particular enthusiasm for challenging the status quo.

Session Topic Details – ESS for Boulder Mountain

The Boulder Mountain Avalanche in March 2010 required some traditional and a wide variety of non-traditional ESS responses including support to SAR and RCMP and the management of national media. This 2011 ESSA Conference presentation will share the experiences of volunteers, best practices and lesson learned during this event. What could ESS look like when if think outside of the box?

2011 ESSA Conference Speaker Bio



Michael Caruth
Corporal
RCMP, Coquitlam Detachment

Mike Caruth is a Corporal with the RCMP. Mike is currently a general duty road supervisor at the Coquitlam Detachment. He has been with the RCMP for ten years with duties ranging from small town policing in northern BC and working in small First Nation communities to smuggling and organized crime investigations. Mike grew up in Vancouver and now resides in Langley. Mike first made this presentation in 2006 and this will be the first time it has been presented outside of Langley.

Session Topic Details – Security for Emergency Social Services Workers

This session will include a brief look at ideas, thoughts and considerations to keep you safe in your role as Emergency Social Service Workers. Topics of discussion will include personal safety, dealing with people, law, policy, accountability, facilities and violence.

2011 ESSA Conference Speaker Bio



Rob Johns
Emergency Coordinator
City of Victoria

Rob Johns is the Emergency Coordinator for the City of Victoria. He has been employed as an emergency planner for 10 years, with seven of those concentrating on ESS. Rob has volunteered for 10 years previously, all as a radio operator.

His ESS resume includes working at almost 200 different emergency events, including ESS events, EOC's, and Incident Command Posts, for a variety of hazards including fires, wild fires, storms, tsunamis, gas leaks, etc.

Session Topic Details – Lessons from New Zealand's Quake

We will look at the Christchurch, NZ earthquake of September 4, 2010. On that date the city was rocked by a 7.1 earthquake. Since that time over 4000 aftershocks have occurred, with many of those aftershocks causing more damage.

In October, a team from Greater Victoria attended Christchurch and spoke to dozens of people there. We found a city the same age and size as Greater Victoria, with a similar population, buildings, and a modern and very capable emergency management system. The learning from this event is directly applicable all involved in emergency management from the South Western part of province.

Sara Walsh

Emergency Program Coordinator
City of Victoria

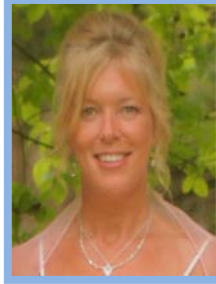
Sara Walsh is the Deputy Emergency Coordinator with the City of Victoria. She is a graduate of the Applied Disaster Emergency Studies BSc program at Brandon University.

Session Topic Details – A Vision for Working with Vulnerable Populations

We know we need to better at serving vulnerable populations in a disaster, but how do we go about doing this? Join Sara Walsh as she discusses some of the challenges and successes she has had during her 2.5 years as Deputy Emergency Coordinator with the City of Victoria. As a student of emergency management, Sara contributed to several national reports on disaster social vulnerability. Now she needs to make the research work where the rubber hits the road.

This session will explore the resources available for enhancing ESS service to vulnerable populations as well as broader concepts around disaster social vulnerability and various emergency management planning initiatives around Recovery and outreach to non-profit organizations. She will discuss how Evacuee Assistance (ESS) in Victoria is beginning the work of enhancing their service to at-risk populations and making the tools of the trade more accessible to meet a variety of functional needs.

2011 ESSA Conference Speaker Bio



Susanne Mackinnon

PHSA, Agency Lead
Children's, Women's & Sunny Hill Hospitals,
BC Provincial Renal Agency and BC Transplant

Susanne Mackinnon has been involved in the Emergency Social Services program for almost 15 years as part of the Disaster Assistance Team for Vancouver and the Provincial Southwest ESS Mobile Support Team. She was a trainer for the Neighbourhood Emergency Preparedness Program for Vancouver as well as a Red Cross volunteer.

Susanne has completed the Emergency Management Program at the Justice Institute and is a Certified Business Continuity Planner as designated by the Disaster Recovery Institute. Susanne worked in the Advanced Planning Unit for the Provincial Emergency Program during the 2007 freshet and is currently an Agency Lead in Emergency Management for Children's and Women's Hospital of BC. Prior to this role, Susanne worked in paediatric acute and critical care at Children's hospital for over 20 years.

Susanne's research and passion is in the development of an integrated emergency management approach to addressing vulnerable or at risk population groups and is a member of several provincial and national working groups. As well, Susanne is Chair of the Provincial ESS-Health Integration Charter Committee.

Session Topic Details – Health and ESS

The ESS-Health Charter is an exciting initiative that endeavors to identify potential issues and opportunities for collaborative planning and response between the health sector, local government Emergency Social Services responders and non government organizations. This session will focus on the progress made to date and include results obtained from a recent municipality/health sector/ESS tabletop exercise held in the JI simulation lab as well as next steps.